

**interflo®**



**Catalogue**  
DYNAMIC PALLET FLOW RACKS, REVERSE FLOW RACKS PICKING TUNNEL.

## PALLET FLOW SYSTEM

### DYNAMIC GRAVITY STORAGE RACKS FOR PALLETS

**Ideal for:**

- > High volume and high turnover product storage.
- > Finished product storage.
- > Cross Dock and Buffer Storage.
- > Picking Operations.
- > Maximize storage space.
- > Fewer aisles- One for load and one for unload.
- > Improves Productivity
- > Lowers labor and equipment costs

First in First Out  
FIFO




- > Space saving
- > No intermediate aisles

- > Increase productivity
- > Reduced forklift truck operations
- > Fast handling and picking

### Conventional Storage Racks For Pallets

Floor storage wastes the height

**Selective racks wastes space for aisles**





# INCREASE YOUR WAREHOUSE STORAGE CAPACITY /PALLET FLOW SYSTEM

Get Your Warehouse **FLOWING!**



Pallet flow racking systems are a FIFO (First In First Out) dynamic storage system. Gravity flow racking maximizes storage space by minimizing aisles.





# REVERSE FLOW SYSTEM

## IMMEDIATE ACCESS TO MULTIPLE SKU MAXIMIZE SPACE WAREHOUSE UTILIZATION

> Ideal for cooler and freezer buildings.

> Warehouse floor space utilization can be maximized  
The Reverse Flow System stores up to 6 pallets deep.



> Immediate access to all your products

> Fifo stock rotation for lot codes

> Increase productivity

> Reduced forklift truck operations

### *Ideal for:*

- > Maximize spaces in cooling and freezing chambers.
- > Restock Picking areas



## PICKING TUNNEL WAREHOUSING AND PICKING IN ONE AREA



**Increase your handling and picking operations**

PICKING SYSTEM

### BENEFITS GRANTED BY THE SYSTEM

- > Use the Picking aisle height for stock and/or restock the picking zone.
- > Increase your handling and packing efficiency
- > Reduced forklift operations
- > Time and labor savings
- > Lower equipment costs.
- > Use the Picking aisle height for stock and/or restock the picking zone.
- > Use the upper levels to store products.



> Direct re plenishing for the picking at floor level.

> Faster loads to the trucks

- > **Dynamic Picking** of pallets or boxes with automatic Restock.
- > Automatic FIFO Picking Operation. Picking tunnel for operator's safety. The forklifts can't access the tunnel.
- > PICK ALL YOUR PRODUCTS from the same pickind alley and avoid waste of time picking from different sites.
- > Picking tunnel or aisle with direct access to multiple SKU.
- > Increase your product diversity and save space with the Carton Flow system for trays and boxes.



# MASTER DISTRIBUTION CENTER / BEVERAGE JUICES

>



## PROJECT

5 Pallet flow modules, 29 pallets deep and 4 levels.

1 Picking tunnel with 3 levels for storage and 1 Picking level

> These pallet flow modules have a capacity of 34,500 pallets in an area of 185,000 square feet

>



## KEY BENEFITS

### Centralized Inventory

- > No need of additional space for warehouse at their 2 productive facilities.
- > 10 regional warehouses were closed
- > Reduction in inventory

### Better space utilization of the factory

- > Now Their 2 factories have additional space for production eliminating the conventional warehouse.

>





► Fresh products in a centralized distribution center



**\*Positions stored:  
previous 8.900 vs. Current 24.000.**

► **BENEFITS AND SAVINGS ACHIEVED**

- > **220,000 SQ FT**
- > Very efficient cross dock.
- > Savings in logistics costs.
- > Reduction in the number of lift trucks.
- > Faster truck loading.
- > Very efficient picking rates.
- > labor cost savings.
- > Very efficient load trucks rates.
- > Very fast return on investment.





## DYNAMIC GRAVITY FLOW PALLET RACK FOR FINISHED GOODS

HIGH INVENTORY TURNOVER FOR PRODUCTS  
AUTOMATICALLY FIRST IN FIRST OUT (FIFO)

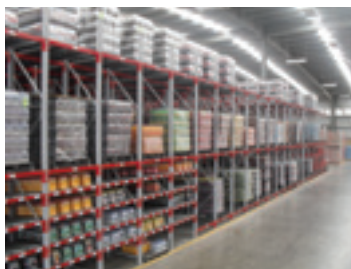
### P R O J E C T



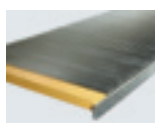
Two sections of gravity flow 14 pallets deep 1,500 pallets stored at dynamic racks levels. Flexible to operate with plastic and wood pallets.

#### ADVANTAGES OF A PALLET FLOW RACKING SYSTEM:

- > Space Saving High Density Storage.
- > Dynamic "flowing" warehousing/FIFO.
- > Fast and Immediate access to each product.
- > Versatile suitable for cooler and freezer storage applications.
- > Fast, Practical and efficient Operation. Tested for your application.
- > Time saving only one input and one output aisle.
- > References for all types of industries.

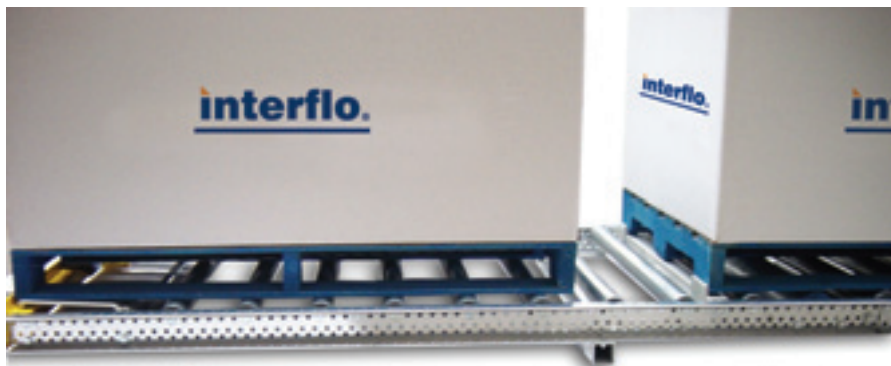






## ROLLER SYSTEMS

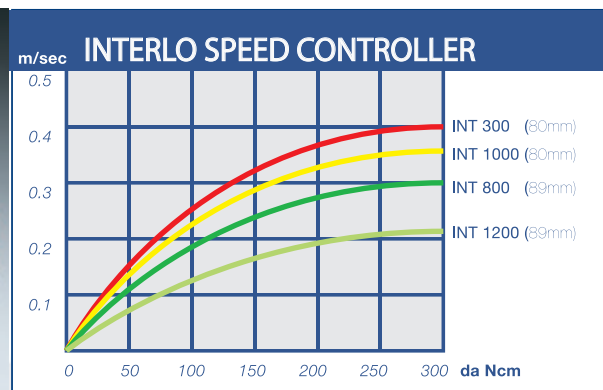
### > Pallet Separator



### > Roller systems



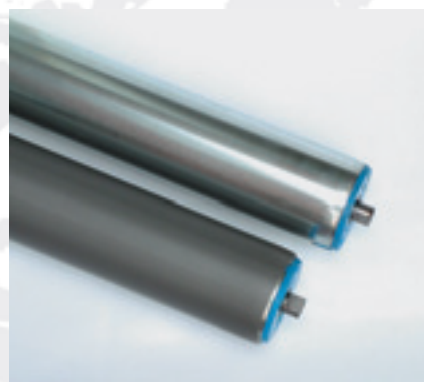
### > Speed controller



### > Indirect speed controller



### > Anti-slide speed controller

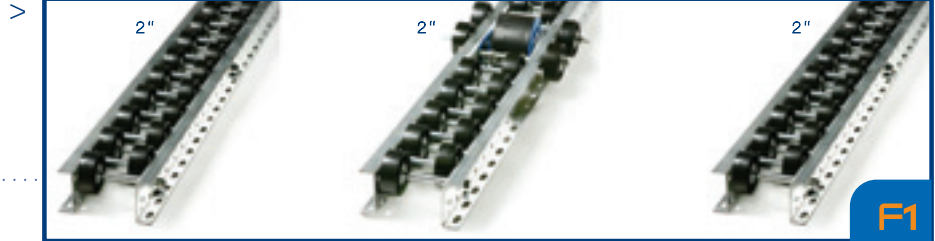


# PALLET FLOW RAIL TRACKS

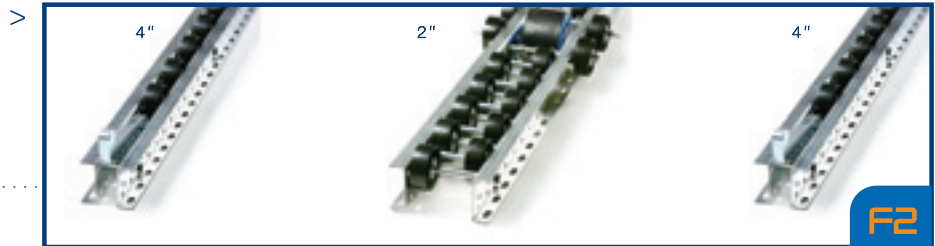


## PLASTIC WHEEL TRACK SYSTEM

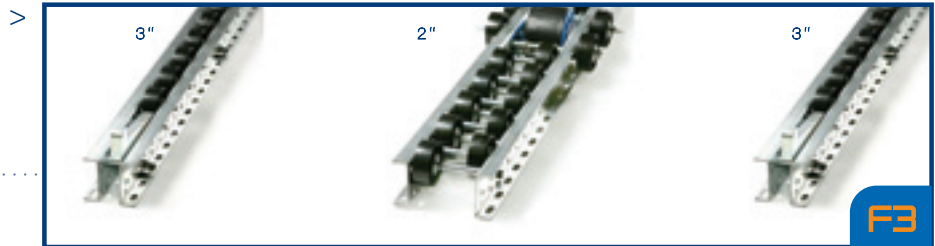
System **F1**



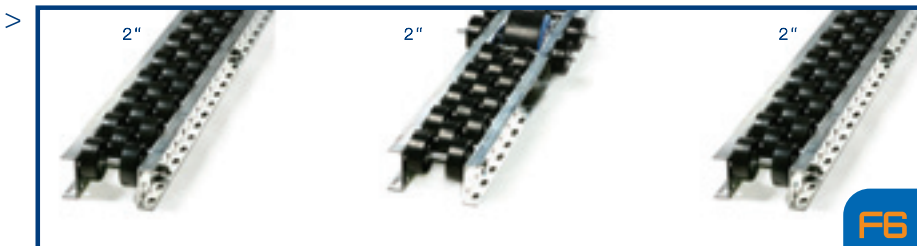
System **F2**



System **F3**



System **F5**



System **F6**



System **RF1**





# RAIL SYSTEMS COMPONENTS

> Wedge stop



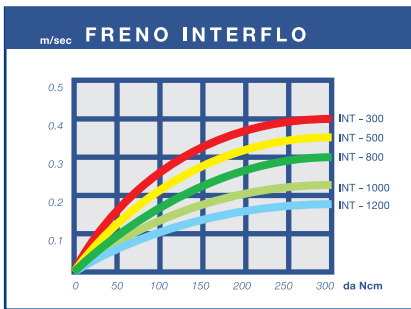
> Interflo support channel



> Speed controller



> Capacity chart.



> Tandem speed controller



> Interflo plastic wheel



> Interflo aluminum wheel for high impact application.



## REFERENCES

- > A.Schulman
- > Cadbury Schweppes de México
- > Cargill de México
- > Casa Cuervo
- > Chambourcy (Industrias Club)
- > Chantilly de México
- > Cía. Manufacturera Asturias
- > Coca Cola
- > Con Alimentos
- > Cooper Standard de México
- > Cremería Americana
- > Danone
- > Envases Universales
- > Exxon / Mobil Oil
- > Fábrica de Jabón La Corona
- > Frexport
- > Frugosa
- > Geusa / Pepsi
- > Grupo Bimbo
- > Grupo Jumex
- > Grupo Lala
- > Grupo Modelo
- > Hemex (Hella)
- > Herdez
- > Hershey's de México
- > Hewlett Packard
- > Hitachi (Unisia)
- > John Deere
- > Kerry Ingredients
- > Kodak
- > Lala / Derivados
- > Lastur
- > Man Ferrostaal
- > Marinela (Grupo Bimbo)
- > Nestlé
- > Northern Telecom
- > Novo Nordisk
- > Omnilife
- > Pepsi
- > Productos del Monte (Con Agra)
- > Quaker (Gatorade)
- > Sabritas / Frito Lay
- > Sigma Alimentos
- > Valle Redondo
- > Xerox / Flextronics

**interflo**<sup>®</sup>

### Manufacturing Plant / Sales Guadalajara

Av. Río de Tizapán 1611  
Zona Industrial Atlas  
Guadalajara, Jalisco, México. C.P. 44870

### Sales Monterrey

Boulevard Antonio L. Rodríguez No. 3058  
Col. Santa María, C.P. 64650  
Monterrey, N.L.  
EDIFICIO "PLAZA DELPHI"  
PISO: P.H. No. 2

### PHONE

Gdl. (33) 3343 0343 / 44

**01 800 813 8800**

ventas@interflo.com.mx

**www.interflo.com.mx**