

interflo®



Catalogue
DYNAMIC PALLET FLOW RACKS, REVERSE FLOW RACKS PICKING TUNNEL.

PALLET FLOW SYSTEM

DYNAMIC GRAVITY STORAGE RACKS FOR PALLET

Ideal for:

- > High volume and high turnover product storage.
- > Finished product storage.
- > Cross Dock and Buffer Storage.
- > Picking Operations.
- > Maximize storage space.
- > Fewer aisles- One for load and one for unload.
- > Improves Productivity
- > Lowers labor and equipment costs

First in First Out
FIFO




- > Space saving
- > No intermediate aisles

- > Increase productivity
- > Reduced forklift truck operations
- > Fast handling and picking

Conventional Storage Racks For Pallets

Floor storage wastes the height

Selective racks wastes space for aisles



INCREASE YOUR WAREHOUSE STORAGE CAPACITY /PALLET FLOW SYSTEM

Get Your Warehouse
FLOWING!



Pallet flow racking systems are a FIFO (First In First Out) dynamic storage system. Gravity flow racking maximizes storage space by minimizing aisles.



REVERSE FLOW SYSTEM

IMMEDIATE ACCESS TO MULTIPLE SKU MAXIMIZE SPACE WAREHOUSE UTILIZATION

> Ideal for cooler and freezer buildings.

> Warehouse floor space utilization can be maximized
The Reverse Flow System stores up to 6 pallets deep.



> Load and unload your products in one aisle.

> Immediate access to multiple sku



> Immediate access to all your products

> Fifo stock rotation for lot codes

> Increase productivity

> Reduced forklift truck operations

Ideal for:

- > Maximize spaces in cooling and freezing chambers.
- > Restock Picking areas

PICKING TUNNEL WAREHOUSING AND PICKING IN ONE AREA



Increase your handling and picking operations

PICKING SYSTEM

BENEFITS GRANTED BY THE SYSTEM

- > Use the Picking aisle height for stock and/or restock the picking zone.
- > Increase your handling and packing efficiency
- > Reduced forklift operations
- > Time and labor savings
- > Lower equipment costs.

- > Use the Picking aisle height for stock and/or restock the picking zone.
- > Use the upper levels to store products.



- > **Dynamic Picking** of pallets or boxes with automatic Restock.
- > **Automatic FIFO Picking Operation.** Picking tunnel for operator's safety. The forklifts can't access the tunnel.
- > **PICK ALL YOUR PRODUCTS** from the same pickind alley and avoid waste of time picking from different sites.
- > Picking tunnel or aisle with direct access to multiple SKU.
- > **Faster loads to the trucks**
- > Increase your product diversity and save space with the Carton Flow system for trays and boxes.



MASTER DISTRIBUTION CENTER / BEVERAGE JUICES

>



PROJECT

- > 5 Pallet flow modules, 29 pallets deep and 4 levels.
- > 1 Picking tunnel with 3 levels for storage and 1 Picking level
- > These pallet flow modules have a capacity of 34,500 pallets in an area of 185,000 square feet

>



KEY BENEFITS

Centralized Inventory

- > No need of additional space for warehouse at their 2 productive facilities.
- > 10 regional warehouses were closed
- > Reduction in inventory

Better space utilization of the factory

- > Now Their 2 factories have additional space for production eliminating the conventional warehouse.

>



► Fresh products in a centralized distribution center



***Positions stored:**
previous 8.900 vs. Current 24.000.

► **BENEFITS AND SAVINGS ACHIEVED**

- > **220,000 SQ FT**
- > Very efficient cross dock.
- > Savings in logistics costs.
- > Reduction in the number of lift trucks.
- > Faster truck loading.
- > Very efficient picking rates.
- > labor cost savings.
- > Very efficient load trucks rates.
- > Very fast return on investment.



DYNAMIC GRAVITY FLOW PALLET RACK FOR FINISHED GOODS

HIGH INVENTORY TURNOVER FOR PRODUCTS
AUTOMATICALLY FIRST IN FIRST OUT (FIFO)

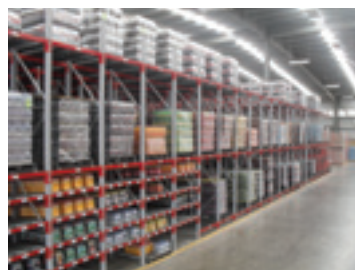
P R O J E C T

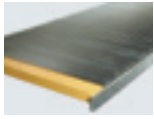


Two sections of gravity flow 14 pallets deep 1,500 pallets stored at dynamic racks levels. Flexible to operate with plastic and wood pallets.

ADVANTAGES OF A PALLET FLOW RACKING SYSTEM:

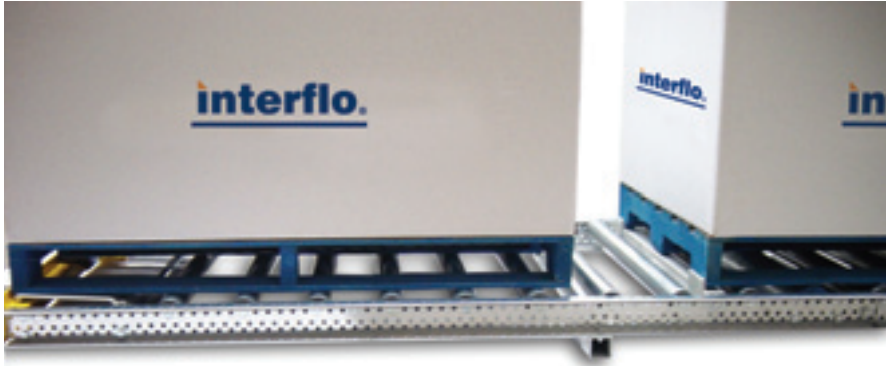
- > Space Saving High Density Storage.
- > Dynamic "flowing" warehousing/FIFO.
- > Fast and Immediate access to each product.
- > Versatile suitable for cooler and freezer storage applications.
- > Fast, Practical and efficient Operation. Tested for your application.
- > Time saving only one input and one output aisle.
- > References for all types of industries.





ROLLER SYSTEMS

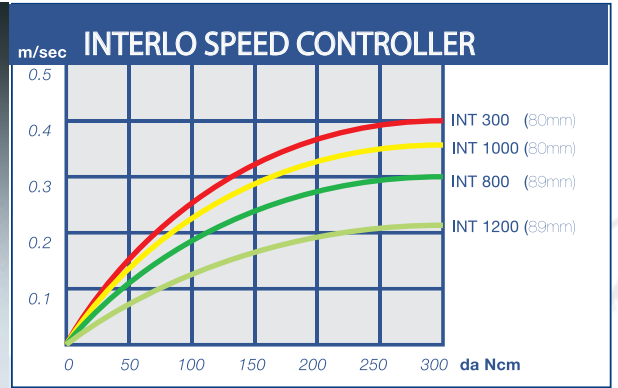
> Pallet Separator



> Roller systems



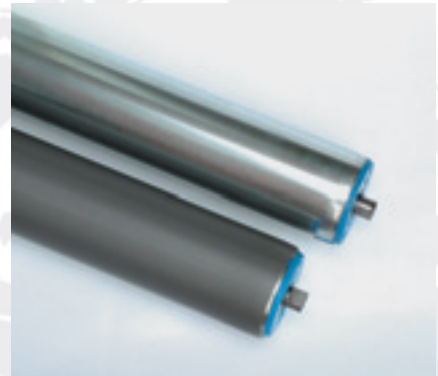
> Speed controller



> Indirect speed controller



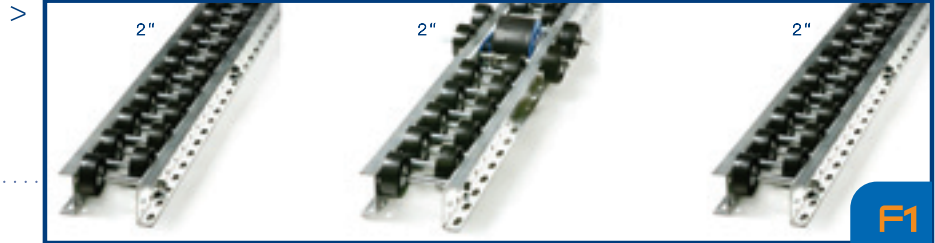
> Anti-slide speed controller



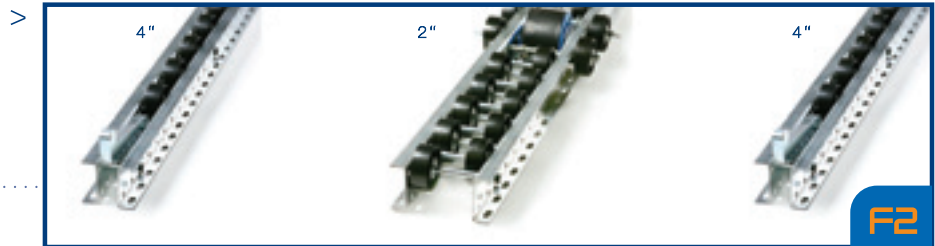


PLASTIC WHEEL TRACK SYSTEM

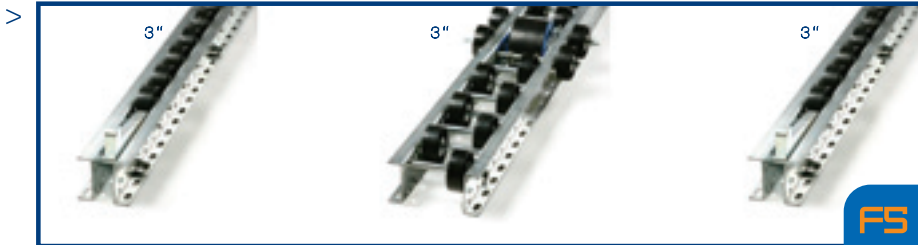
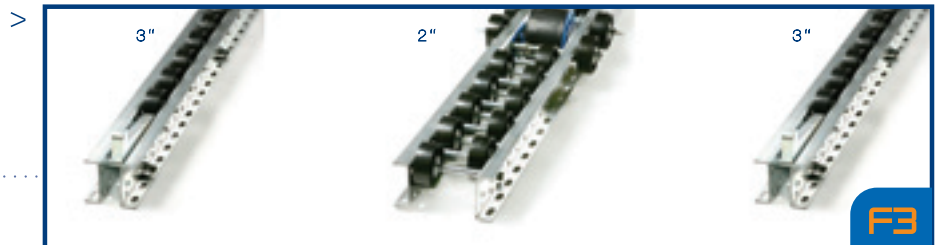
System **F1**



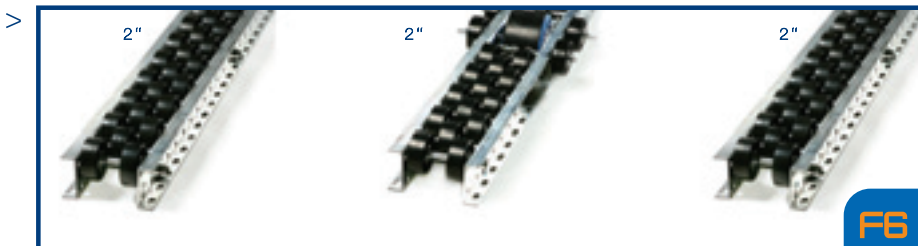
System **F2**



System **F3**



System **F5**



System **F6**



System **RF1**



RAIL SYSTEMS COMPONENTS

> Wedge stop



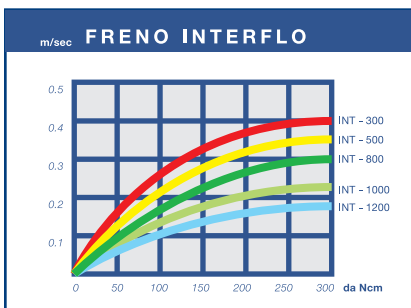
> Interflo support channel



> Speed controller



> Capacity chart.



> Tandem speed controller



> Interflo plastic wheel



> Interflo aluminum wheel for high impact application.



REFERENCES

- > A.Schulman
- > Cadbury Schweppes de México
- > Cargill de México
- > Casa Cuervo
- > Chambourcy (Industrias Club)
- > Chantilly de México
- > Cía. Manufacturera Asturias
- > Coca Cola
- > Con Alimentos
- > Cooper Standard de México
- > Cremería Americana
- > Danone
- > Envases Universales
- > Exxon / Mobil Oil
- > Fábrica de Jabón La Corona
- > Frexport
- > Frugosa
- > Geusa / Pepsi
- > Grupo Bimbo
- > Grupo Jumex
- > Grupo Lala
- > Grupo Modelo
- > Hemex (Hella)
- > Herdez
- > Hershey's de México
- > Hewlett Packard
- > Hitachi (Unisia)
- > John Deere
- > Kerry Ingredients
- > Kodak
- > Lala / Derivados
- > Lastur
- > Man Ferrostaal
- > Marinela (Grupo Bimbo)
- > Nestlé
- > Northern Telecom
- > Novo Nordisk
- > Omnilife
- > Pepsi
- > Productos del Monte (Con Agra)
- > Quaker (Gatorade)
- > Sabritas / Frito Lay
- > Sigma Alimentos
- > Valle Redondo
- > Xerox / Flextronics

interflo®

Manufacturing Plant / Sales Guadalajara

Av. Río de Tizapán 1611
Zona Industrial Atlas
Guadalajara, Jalisco, México. C.P. 44870

Sales Monterrey

Boulevard Antonio L. Rodríguez No. 3058
Col. Santa María, C. P. 64650
Monterrey, N.L.
EDIFICIO "PLAZA DELPHI"
PISO: P.H. No. 2

PHONE

Gdl. (33) 3343 0343 / 44

01 800 813 8800

ventas@interflo.com.mx

www.interflo.com.mx